

28.03.2016

De Mazenod College.

1st Term Test - 2016

Grade - 7

Science.



1 Select the correct answer

(1) Plants are two types, flowering plants and non flowering plants.

Select the group of non flowering plants.

- i) Curry leaves, katarolu, sal
- ii) Curry leaves, cycas, ferns
- iii) cycas, Drynaria, ferns.
- iv) cycas, Drynaria, katarolu.

(2) Select the group of plants with a tap root system.

- i) kuppameniya, chilli, Mango
- ii) coconut, Arecanut, Palmyrah
- iii) Paddy, Grass, Bamboo
- iv) kuppameniya, chilli, Palmyrah

(3) Select the group of plant roots, which involve in vegetative reproduction.

- i) Curry leaves, Belli, Breadfruit
- ii) Mango, Arecanut, coconut
- iii) Carrot, Beet, chilli
- iv) curryleaves, Belli, arecanut

(4) Select the plant root which stored food in it.

- i) Sweet potato
- ii) Manioc
- iii) cashew
- iv) carrot.

(5) Bacterias who live in the root nodules of leguminose plant,

- i) provide nitrogen nutrients to the plant.
- ii) cause some diseases.
- iii) decrease the growth of plant.
- iv) change the colour of the plant.

(6) Select the group of plant stems which carry out photosynthesis.

- i) coconut, palmyrah ii) Nawahandi, Hathawariya.
 iii) arecanut, Hathawariya iv) Mango, Nawahandi

(7) Hibiscus, Mango, Jack, Gotukola,

• Venation of the above plants are,

- i) Parallel venation ii) Reticulate venation
 iii) Parallel and reticulate.
 iv) None of the above.

(8) Select the parts belong to the androecium of a flower

- i) Stigma, style, ovary. ii) filament, anther
 iii) Stigma, anther iv) style, filament.

(9) Select the dispersion method of wara, Hora and Gummalu

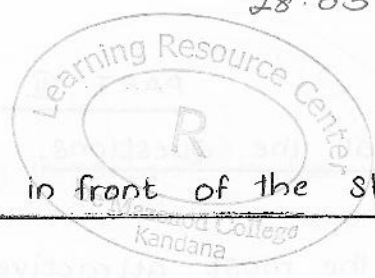
- i) by water ii) by animals iii) by wind iv) by water
 and by wind.

(10) Static electric charges generated on objects by rubbing.

The equipment used to identify these charges is,

- i) Ammeter ii) Tester iii) Voltmeter iv) Gold leaf
 electroscope.

(10 × 2 = 20)



2

Match 'A' with 'B'

Write the correct letter in front of the statement.

A

B

- | | |
|--|---|
| 1) The amount of electrical charges stored in a capacitor is measured by the unit... () | (a) Lead and diluted Sulphuric acid. |
| 2) Cells and batteries... () | (b) dissolved in water |
| 3) Dynamo... () | (c) Zinc plate, carbon rod, Manganese dioxide. |
| 4) A setup constructed using several cells... () | (d) Farads. |
| 5) These are used in wrist watches and calculators... () | (e) direct current. (D. c) |
| 6) Substances in a car battery... () | (f) Battery. |
| 7) Substances used in a drycell () | (g) is an equipment generate electricity by rotating. |
| 8) The current that flows to one direction () | (h) Button cells. |
| 9) Gases such as oxygen and carbondioxide () | (i) artificial vinegar |
| 10) Acitic acids mixed with water, ... make () | (j) Produce electricity by chemical reaction. |

PART II

Answer all the Questions.

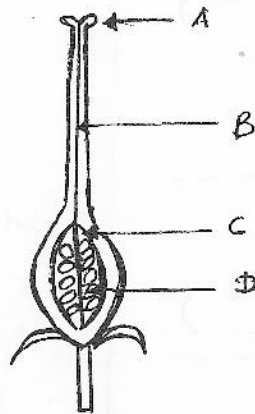
① Flower is the most attractive part in the plant.

(i) Write a short note about the following parts of a flower

a) sepals

b) petals.

(ii) Label A, B, C and D.



(iii) Give the name of the above part of the flower.

*** Flowering plants produce seeds. These seeds dispersed by different methods. Dispersed by water is one method.

(iv) Write 2 special characteristics (adaptations) of coconut to dispersed by water.

*** A student soaked some seeds and planted them in two vessels A and B.

Vessel A → Seed leaves observed during germination.

Vessel B → seed leaves cannot be observed during germination

(v) Select the types of plant seeds from the list given below which grow in above vessels separately.

[Paddy, Beans, arecanut, Maize, Longbeans, chickpea]

Vessel A →

Vessel B →



② Diversity of plant leaves are very important in beautifying the environment.

(i) Draw a labelled diagram of a plant leaf.

(ii) Classify the plant leaves given below according to their venation patterns.

[Hibiscus , Kathurumurunga , Jack , Papaw , Tamarind , Coconut]

• Reticulate venation →

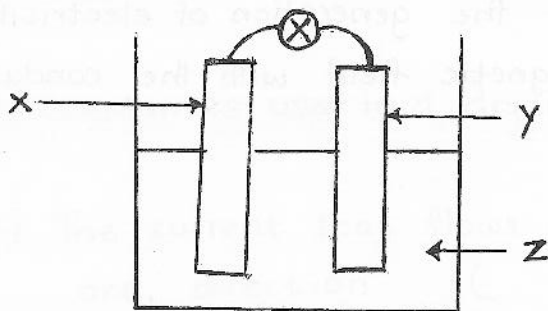
• Parallel venation →

(iii) Write two functions of plant leaves.

(iv) complete the table.

Plant	Special type of root	function of the root
Banyan	-----	-----
orchid.	-----	-----

③(A) Given below is a diagram of a simple cell.



i) Name x , y and z

ii) Write an observation of the above setup after few minutes.

iii) Write the names of the (+) and (-) terminal of the above setup.

(B) copy the table below and complete it.

Instance	Source	Type of current used to operate it.	
		Direct current	Alternating current
eg→ • Light up the lamp of a bicycle	Dynamo	-	✓
• Using a mobile phone	-----	-----	-----
• House hold circuits	-----	-----	-----

** When you move a bar magnet in and out of a coil which is connected to a galvanometer,

- i) What is your observation?
- ii) What do you call "the generation of electricity in a conductor by cutting the magnetic field with the conductor"





- ④ i) What are static electrical charges?
ii) Name the first scientist who stated about the static electric charges.

•• An ebonite rod which is rubbed with woolen cloth brought towards the glass rod rubbed with silk.

- iii) What is your observation?
iv) Write the reason for your observation.
v) Write the charges gained by the,
a) ebonite rod →
b) Glass rod →
vi) If you repeat the above activity for several times, what is your observation?
vii) Explain the above answer.

⑤ a) Fill in the blanks using the following words.
[sea water / coconut oil / solvent / water / Salt powder]

Most substances dissolved in water, so water is a good ①
dissolve well in water but not ②
④ act as a medium for biological activities in human body. Sodium chloride is obtained by evaporating ⑤ water.

Q-(b) →

b) Given below are some plant varieties identified by the group of students in the field trip.

Name of the plant	Benduru	Maduwel	Kitul	Castor	Mahogany
No. of plants.	6	8	4	4	2

- i) Display the above data in a bar chart.
- ii) Write a plant with a weak stem.
- iii) Which plant seed is very similar to a shape of an insect?